

GENERAL NOTE ON CORING OF SLABS & WALLS:
 WHEREVER POSSIBLE, CONTRACTOR MUST FIRST REUSE EXISTING PENETRATIONS IN THE REINFORCED CONCRETE FLOOR SLABS AND WALLS FOR ANY PIPING, CONDUIT, DUCTWORK, ETC. WHERE NEW PENETRATIONS ARE UNAVOIDABLY REQUIRED IN THE BUILDING, AND NOT SHOWN IN THE STRUCTURAL DRAWINGS, OBTAIN WRITTEN APPROVAL BY THE STRUCTURAL ENGINEER AND ARCHITECT. APPROVAL WILL REQUIRE THE NEW PENETRATION BE X-RAYED PER REQUIREMENTS DESCRIBED ON STRUCTURAL DRAWINGS.

- APPLIED FIREPROOFING NOTES:**
1. PROVIDE MINIMUM 1-HOUR APPLIED FIRE RESISTANCE AS PART OF THE BASIC SCOPE OF WORK AT ALL NEW STRUCTURAL STEEL BEAMS, COLUMNS, CONNECTORS, AND APPURTENANCES.
 2. PROVIDE MINIMUM 1-HOUR APPLIED FIRE RESISTANCE AS PART OF THE BASIC SCOPE OF WORK AT ALL EXISTING UNPROTECTED STRUCTURAL STEEL BEAMS, COLUMNS, CONNECTORS, APPURTENANCES, AND ANY METAL DECKING THAT IS UNPROTECTED BY CONCRETE SLAB ABOVE. SEE ALSO SECTION 01 21 00 - ALLOWANCES.

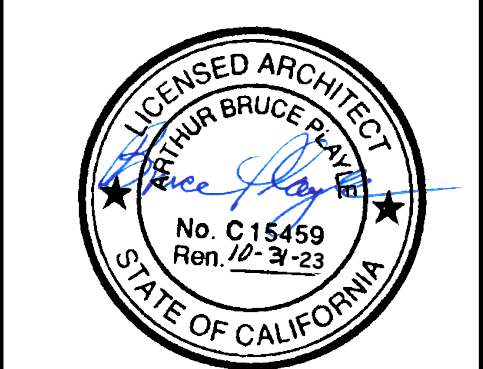
FLOOR PLAN LEGEND

◆◆◆◆	(E) 2-HOUR FIRE BARRIER PER CBC 707	▨	(E) FURRED WALL O/ (E) CONC. WALL TO REMAIN
▬▬▬▬	2-HOUR EXIT PASSAGEWAY WALL PER CBC 1024.3	▬▬▬▬	MTL. STUD WALL, SEE WALL TYPES
▬▬▬▬	(E) 2-HOUR EXIT PASSAGEWAY WALL PER CBC 1024.3	▬▬▬▬	WALL INFILL @ (E) OPENING, MATCH (E) FRAMING & FINISH
▬▬▬▬	1-HOUR OCCUPANCY SEPARATION WALL PER CBC TABLE 508.4	▬▬▬▬	(E) DOOR & FRAME TO REMAIN
▬▬▬▬	(E) FRAMED WALL TO REMAIN	▬▬▬▬	DOOR & FRAME TO REMAIN
▬▬▬▬	(E) CONC. WALL / COLUMN TO REMAIN	▬▬▬▬	CONC. REPAIR MORTAR, SEE SPEC. SECTION 03 92 50 & DTL. 5/S-511
▬▬▬▬	(E) GYP. BD. O/ (E) CONC. WALL / COLUMN TO REMAIN		

- FLOOR PLAN GENERAL NOTES**
1. SEE SHEET A-001 FOR WALL TYPES, CASEWORK & SIGNAGE KENOTE SCHEDULES.
 2. SEE SHEET A-581 FOR WALL TYPE DETAILS & A-582 & A-583 FOR WALL BOTTOM & TOP CONDITION DETAILS.
 3. SEE SHEET A-601 & A-602 FOR DOOR SCHEDULES.
 4. SEE SHEET A-604 FOR WINDOW & LOUVER SCHEDULES.
 5. SEE INTERIORS SHEETS "IF-XXX" FOR FURNISHING PLANS.
 6. SEE INTERIORS SHEETS "IE-XXX" FOR INTERIOR ELEVATIONS.
 7. SEE INTERIORS SHEETS "IX-XXX" FOR INTERIOR FINISH SCHEDULES & INTERIOR ELEVATION NOT SHOWN IN ARCHITECTURAL PLANS.
 8. ALL SHEATHING SURFACE PLANES TO BE CONTINUOUS. ALL GYPSUM BOARD PARTITIONS SHALL BE TAPED AND SANDED SMOOTH WITH NO VISIBLE JOINTS. THE CONTRACTOR SHALL PATCH AND REPAIR ALL SURFACES TO MATCH ADJACENT OR ADJOINING SURFACES WHEREVER REQUIRED.
 9. ALL FULL-HEIGHT INTERIOR WALLS SHALL RECEIVE SOUND BATT INSULATION, TYP.
 10. PROVIDE BACKING PER STANDARD WALL DETAILS FOR CASEWORK BRACKETS, GRAB BARS, HANDRAILS, AV EQUIPMENT, ETC.
 11. CONTRACTOR TO COORDINATE EXACT LOCATION AND DESIGN OF CASEWORK, FLOORING, AND EQUIPMENT LAYOUT WITH OWNER PRIOR TO INSTALLATION.
 12. SEE AS-101 FOR SITE GATE & DOOR SCHEDULE.
 13. SEE SPEC SECTION 12 24 94 FOR LOCATION OF MANUAL ROLLER SHADES, SECTION 12 24 00 FOR LOCATION OF MOTORIZED WINDOW SHADES & SECTION 12 21 13 FOR LOCATION OF HORIZONTAL LOUVER BLINDS.

FLOOR PLAN KEYNOTE SCHEDULE

KEY	DESCRIPTION
01	NOT USED
02	IN-WALL PAYMENT DROP BOX - SEE C3/A525
03	CONC. REPAIR MORTAR INFILL, SEE STRUCTURAL DWGS. & SPEC SECTION 03 92 50
04	WALL COVERING TYPE 1 APPLIED TO (N) GYP. BD. FINISHED W/ LEVEL 5 TEXTURE, SEE SPEC SECTION 09 72 00, SIGNAGE DTLs. & INT. ELEV.
05	SELF-HELP KIOSK, OFOI - SEE ELECT. FOR POWER & DATA
06	PRINTING STATION, OFOI - SEE ELECT. FOR POWER
07	TICKETING KIOSK, OFOI - SEE ELECT. FOR POWER & DATA
08	FORMS / LITERATURE DISPLAY, SEE INT. DWGS.
09	DISPLAY CASE MOUNTED TO ALUM. WINDOW MULLIONS, SEE SPEC. SECTION 10 12 00
10	(E) CASEWORK TO REMAIN
11	DISPLAY CASE, SEE SPEC. SECTION 10 12 00
12	REFRIGERATOR, OFOI SHOWN FOR REF ONLY - SHALL BE ADA COMPLIANT PER CBC 11B-309 & 11B-228 IN ACCESSIBLE RESTROOMS. SEE SIGNAGE PLANS FOR ACCESSIBLE ROUTE.
13	MOP SINK, SEE PLUMBING DRAWINGS
14	14x14 WALL ACCESS PANEL, SEE INT. ELEV. & PLUMBING DWGS.
15	RELOCATED T.S. COLUMN W/ (N) GYP. BD. FURRING FOR 1-HR. RATING. SEE S-553
16	INFILL (E) SLAB OPENING, SEE STRUCT. DTL. 12/S-552
17	MEDIA WALL W/ PRESS PATCH PANELS, SEE AV DWGS.
18	HI-LOW ACCESSIBLE DRINKING FOUNTAIN W/ BOTTLE FILLING STATION, SEE C3/G-003 & PLUMBING DWGS.
18A	NON-ADA DRINKING FOUNTAIN W/ BOTTLE FILLING STATION, SEE PLUMBING DWGS.
18B	ADA COMPLIANT BOTTLE FILLING STATION, SEE PLUMBING DWGS.
19	VENDING MACHINE, OFOI SHOWN FOR REF ONLY - 1 MIN. IN ACCESSIBLE BREAK ROOMS SHALL BE ADA COMPLIANT PER CBC 11B-309 & 11B-228.
20	MOBILE STORAGE SHELVING SYSTEM, SEE SPEC. SECTION 10 56 26
21	ADA COMPLIANT WATER DISPENSER, OFOI
22	FLAT SCREEN DISPLAY, WALL MTD., PROVIDE BLK'G PER DTL. ST5.00 SHT. A-503 & AV DWGS. AT (E) WALL, PATCH & REPAIR, (E) WALL FINISHES AFTER INSTALL OF BLK'G
22a	FLAT SCREEN DISPLAY W/ CATV, WALL MTD., PROVIDE BLK'G PER DTL. ST5.00/A-503 & AV DWGS. AT (E) WALL PATCH AND REPAIR, (E) WALL FINISHES AFTER INSTALL OF BLK'G
22b	NOT USED
22c	FLAT SCREEN DISPLAY W/ IN-WALL MOUNTING BOX, SEE DTL. A4/A-533
22d	FLAT SCREEN DISPLAY, CLG. MTD., SEE DTL. 4/AV-401 FOR MOUNTING
23	AV RACK INSTALLED IN BASE CABINET, SEE AV DWGS.
24	ELEVATOR ADA UPGRADE, SEE DTLs. C1 & D1/A-532, TYP. ALL FLOORS. SEE SECURITY DWGS FOR CARD READERS, REF. SPEC SECTION 14 00 00 FOR OTHER REQUIREMENTS
25	FIRE SPRINKLER STANDPIPE & DRAIN ASSEMBLY, SEE FP SHOP DWGS.
26	WALL MONITORS W/ PC TIED TO SECURITY CAMERA'S, SEE SECURITY DWGS.
27	ALUM. WINDOW INFILL PANEL IN (E) ALUM. STOREFRONT SYSTEM
28	VALVE CABINET TO BE SET INTO (E) WALL. ADDL. LAYERS OF GYP. BD. AS REQ'D TO ACHIEVE SEMI-RECESSED INSTALLATION TO FLUSH OUT WALL
29a	12" VIDEO WALL - OFOI, CONTRACTOR TO INSTALL ALL 1/2" PLYWOOD OR SOLID BLK'G ACROSS WALL TO SUPPORT APPROX. WT. 330 LBS. COORD. W/ CITY IN FIELD.
29b	86" UHD TV - OFOI, CONTRACTOR TO PROVIDE BLK'G. COORD. EXACT LOCATION OF BLK'G IN FIELD W/ CITY.
29c	DIGITAL DWG. BD. ON PORTABLE STAND - OFOI, SHOWN FOR REF ONLY.
30	FIRE SPRINKLER STANDPIPE & DRAIN ASSEMBLY, SEE FP SHOP DWGS.
31	(E) 2" STANDPIPE RISER, UPGRADED TO CLASS I SYSTEM. SEE FP DWGS.
31	(E) 4" STANDPIPE RISER, UPGRADED TO CLASS I SYSTEM. SEE FP DWGS.
32	GYP. BD., FINISH TO MATCH ADJACENT FINISHES
33	HORIZ. SLIDING MARKERBOARD, SEE SPEC SECTION 10 11 33
34	(E) MOP SINK TO REMAIN
35	FRAMELESS MAGNETIC WHITEBOARD, SEE SPEC SECTION 10 11 00
36	REPAIR GYP. BD. FIRE CAULK ALL GAPS ALL AROUND OPENING FOR 2-HR RATING
37	MAJOR PATCH & REPAIR OF GYP. BD., THIS WALL
38	INFILL FRAMING @ DOOR HEADER FOR REDUCED HEIGHT
39	PATCH & REPAIR GYP. BD.
40	MODIFY (E) CASEWORK TO FIT NEW AV RACK, SEE AV DWGS.
41	NEW FIXTURE, REUSE (E) DROP THRU SLAB FROM OLD FIXTURE NO LONGER IN PLACE
42	(E) PLUMBING FIXTURE TO REMAIN
43	INSTALL NEW ADA DOOR ACTUATOR, SEE ELECT. DWGS. & HDWR. SPEC.
44	INSTALL NEW ADA DOOR ACTUATOR ON BOLLARD POST, SEE ELECT. & HDWR. SPEC.
45	INSTALL NEW ADA DOOR ACTUATOR ON BOLLARD POST TIED TO CARD READER, SEE SECURITY DWGS. ALSO SEE ELECT. & HDWR. SPEC.
46	NEW WATER CLOSET @ NEW CORE THRU CONC. DECK, SEE PLUMBING DWGS.
47	CONCRETE CORE INFILL @ RELOCATED FIXTURE, SEE STRUCTURAL DTL. 3/S-502



Architect
 Consultant
 Agency Approvals

City Approvals

Issue: CONFORMED SET

No.	Date	Description
56	03-09-23	ASI 043
57	03-20-23	ASI 047
58	4-14-23	ASI 051
59	05-24-23	ASI 065
60	05-26-23	ASI 068
61	06-05-23	ASI 071
62	06-23-23	ASI 079

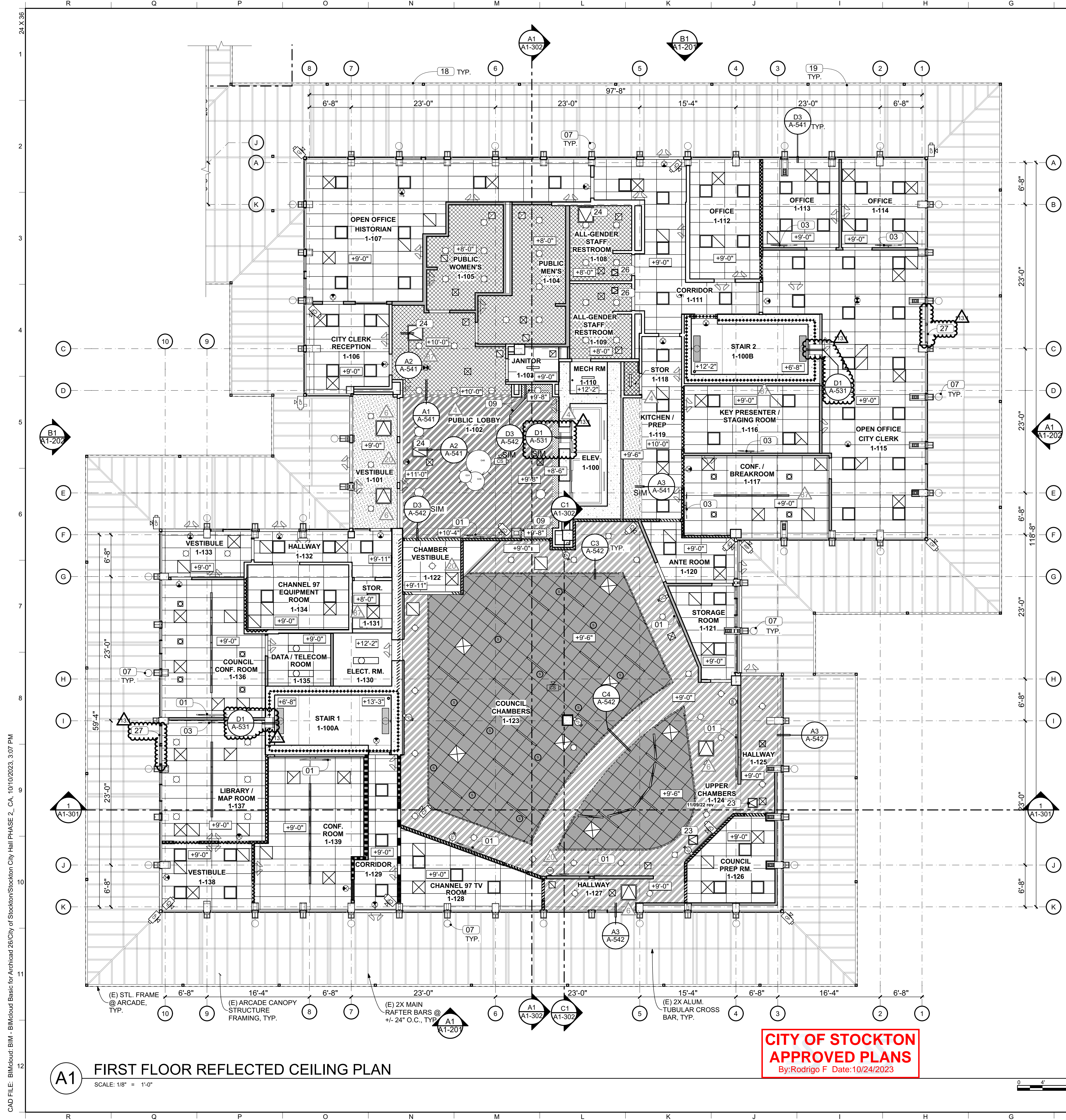
NEW CITY HALL RENOVATIONS & RELOCATION PROJECT
 501 & 509 West Weber Ave.
 Stockton, CA 95203

Architect of Record: BP
 Project Architect: CH
 Drafted By: VPH/OA/JAP
 Checked By: PN
 File Date: 6/23/2023
 Project Number: E016015

Sheet Title
FIRST FLOOR PLAN - BUILDING 1

Sheet Number
A1-101
 Sheet 98 of 477

CAD FILE: BIMcloud Basic for Archicad 26/City of Stockton/Stockton City Hall PHASE 2_CA_6/23/2023, 10:02 AM



REJECTED CEILING PLAN GENERAL NOTES

- 1) PAINT EXPOSED STRUCTURE AND BUILDING SYSTEMS ELEMENTS, INCLUDING MECHANICAL, ELECTRICAL, AND PLUMBING PIPING, CONDUIT, AND DUCTWORK, TYPICAL AT ALL AREAS MARKED "OPEN TO STRUCTURE."
- 2) ALL CEILING HEIGHTS TO BOTTOM OF FINISH CEILING FROM TOP OF FINISH FLOOR, TYP.
- 3) LOCATE ACOUSTICAL GRIDS/ CEILING LINES IN CENTER-LINE OF ROOMS, HALLWAYS U.O.N., TYP.
- 4) SEE MECHANICAL DRAWINGS FOR HVAC CEILING DIFFUSERS, REGISTERS, AND VENTS. REFER TO ARCHITECTURAL RCP. THIS SHEET FOR APPROXIMATE LOCATIONS WITHIN CEILING GRID, WHICH GOVERNS.
- 5) CENTER LIGHT FIXTURES, SENSORS, AND OTHER CEILING MOUNTED DEVICES IN CEILING TILES. U.O.N. FOR FURTHER INFORMATION REGARDING FIRE SPRINKLERS AND LOCATIONS, SEE DESIGN-BUILD SPRINKLER REQUIREMENTS IN PROJECT MANUAL. ALL SPRINKLER HEADS SHALL BE LOCATED AT THE CENTER OF CEILING TILES OR TILE PATTERN AND SOFFITS, TYP UON; COORDINATE INSTALLATION TO AVOID CONFLICTS WITH HEAD LOCATIONS AND PIPE RUNS.
- 7) COORDINATE ALL FRAMING AT RECESSED FIXTURE LOCATIONS TO ACCOMMODATE LAYOUT FIXTURE PRIOR TO FRAMING.
- 8) FIRE SPRINKLER SYSTEM BY DEFERRED SUBMITTAL: PROVIDE ENGINEERING BY CALIFORNIA LICENSED C-10/C-16 FIRE PROTECTION CONTRACTOR. SEE DEFERRED SUBMITTAL REQUIREMENTS ON G-002, C-106, FIRE PROTECTIONS PLANS.
- 9) SEE SHEET A-604 FOR LOUVER & WINDOW SCHEDULE.

REFLECTED CEILING PLAN LEGEND

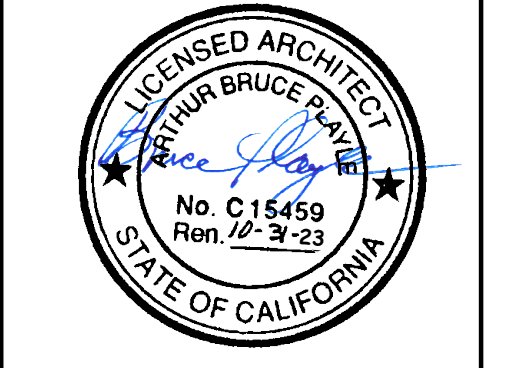
	(E) PARTITION WALL		GYP BD CLG. O/ (E) FRAMING
	PARTITION WALL. SEE FLOOR PLAN FOR WALL TAG & SHEET A001 FOR WALL TYPE SCHEDULE.		(N) DROP SOFFIT @ (N) TRANSACTION WINDOW
	2-LAYER PLENUM BARRIER BOARD FULL HEIGHT OVER (E) WALL. SEE DETAIL WTC10/A-582		(E) GYP.BD. CEILING & FRAMING TO REMAIN
	(E) 2-HOUR EXIT PASSAGEWAY PER CBC 1024.3		MECHANICAL SUPPLY, SEE MECH. DWGS.
	2-HOUR EXIT PASSAGEWAY PER CBC 1024.3. SEE DETAIL WTC06/A-582		MECHANICAL EXHAUST, SEE MECH. DWGS.
	1-HOUR OCCUPANCY SEPARATION PER CBC TABLE 508.4		MECHANICAL RETURN, SEE MECH. DWGS.
	(E) 2-HOUR FIRE BARRIER PER CBC 707		LIGHTING FIXTURE, SEE ELECT. DWGS.
	ACOUSTIC BATT INSULATION OVER CEILING		PENDANT LIGHT FIXTURE, SEE ELECT. DWGS.
	CEILING HEIGHT		EXISTING LIGHT FIXTURE TO REMAIN
	2x4 SUSPENDED ACOUSTIC TILE CEILING W/ TYPE 1 TILE & TYPE B 9/16" BOLT SLOT GRID. SEE SHEETS A-509 TO A-511 FOR STANDARD DETAILS & SPEC SECTION 09 51 00.		EXIT LUMINAIRE, SEE ELECT. DWGS.
	SUSPENDED GYP. BD. CEILING - SEE SHEETS A-505 TO A-508 FOR STANDARD DETAILS		BATTERY PACK EMERGENCY LIGHT FIXTURE, SEE ELECT. DWGS.
	SUSPENDED WOOD CEILING, SEE SPEC. SECTION 09 54 26		CEILING ACCESS HATCH (COORD. EXACT PLACEMENT IN FIELD TO BEST ACCESS TO EQUIP. BEING SERVED)
	FRAMED GYP. BD. CEILING		SECURITY CAMERA, SEE SECURITY DWGS.
	2x2 SUSPENDED FULLY CONCEALED ACOUSTIC TILE CLG. W/ TYPE 3 TILE & TYPE A 15/16" GRID. SEE SHEETS A-509 TO A-511 FOR STANDARD DETAILS & SPEC SECTION 09 51 00.		AUDIO SPEAKER, SEE AV DWGS.
	2x4 SUSPENDED ACOUSTIC TILE CLG. W/ TYPE 2 TILE & TYPE B SLOT BOLT GRID - SEE SHEETS A-509 TO A-511 FOR STANDARD DETAILS & SPEC SECTION 09 51 00.		WALL PENDANT SECURITY CAMERA, SEE SECURITY DWGS.
			PRODUCTION VIDEO CAMERA, SEE AV DWGS.
			COLUMN ARRAY LOUDSPEAKER, SEE AV DWGS.

CEILING PLAN KEYNOTE SCHEDULE

KEY	DESCRIPTION
01	FLAT SCREEN DISPLAY, WALL MTD., SHOWN FOR REF ONLY, SEE FLOOR PLANS & AV DWGS FOR ADD'L NOTES
02	FLAT SCREEN DISPLAY, CLG. MTD., SEE AV DWGS & DTL. 4/AV-401 FOR MTG.
03	FLAT SCREEN DISPLAY W/ CATV, WALL MTD., SHOWN FOR REF ONLY, SEE FLOOR PLANS & AV DWGS. FOR ADD'L NOTES
04	19" X 54" X 12" VIDEO WALL - OFOI. CONTRACTOR TO INSTALL 1/2" PLYWD. BACKING OR SOLID BLKG ACROSS WALL TO SUPPORT APPROX WT. 330 LBS. COORD. W/ CITY IN FIELD.
05	86" FLAT SCREEN TV - OFOI. CONTRACTOR TO PROVIDE BLKG. PER DTL. B4/ A-533. COORD. EXACT LOCATION OF BLKG IN FIELD W/ CITY.
06	NOT USED
07	WALL MTD. EXTERIOR LIGHTING, SEE ELECT.
08	(E) SKYLIGHT IN ROOF DECK ABOVE TO BE INFILLED, SEE DTL. A4/A-528
09	(E) SOFFIT FRAMING TO REMAIN W/ (N) GYP. BD.
10	(E) COVED LIGHT FIXTURE TO REMAIN
11	(E) PENDANT LIGHT FIXTURE TO REMAIN, REINSTALL IN SAME LOCATION
12	RECESSED COVE LIGHTING, SEE ELECT.
13	PATCH & REPAIR (E) GYP. BD. TO MATCH ADJACENT SURFACES, PAINT
14	(E) LINEAR MECH. DIFFUSER TO BE REUSED, SEE MECH. DWGS
15	LINEAR MECH. REGISTERS SET IN LINEAR WOOD CLG. SEE MECH. DWGS
16	(E) UPPER CABINET TO REMAIN
17	UPPER CABINET
18	LED LIGHTING TO REPLACE (E) ALONG UNDERSIDE OF AWNING STRUCTURE, SEE ELECT.
19	(E) COLUMNS @ TS HORIZ. SUPPORTS @ AWNING STRUCTURE, TYP.
20	MOTORIZED WINDOW SHADES IN RECESSED POCKET
21	NOT USED
22	NOT USED
23	18X18 CEILING ACCESS PANEL, SEE SPEC SECTION 08 31 00
24	30X30 CEILING ACCESS PANEL, SEE SPEC SECTION 08 31 00
25	NOT USED
26	12X12 CEILING ACCESS PANEL, SEE SPEC SECTION 08 31 00
27	(E) LOUVER TO REMAIN IN PLACE & CAPPED WHERE DUCT REMOVED, SEE MECH. FOR ADD'L NOTES

A1 FIRST FLOOR REFLECTED CEILING PLAN
SCALE: 1/8" = 1'-0"

CITY OF STOCKTON APPROVED PLANS
By:Rodrigo F Date:10/24/2023



Architect
Consultant
Agency Approvals

City Approvals

Issue: CONFORMED SET

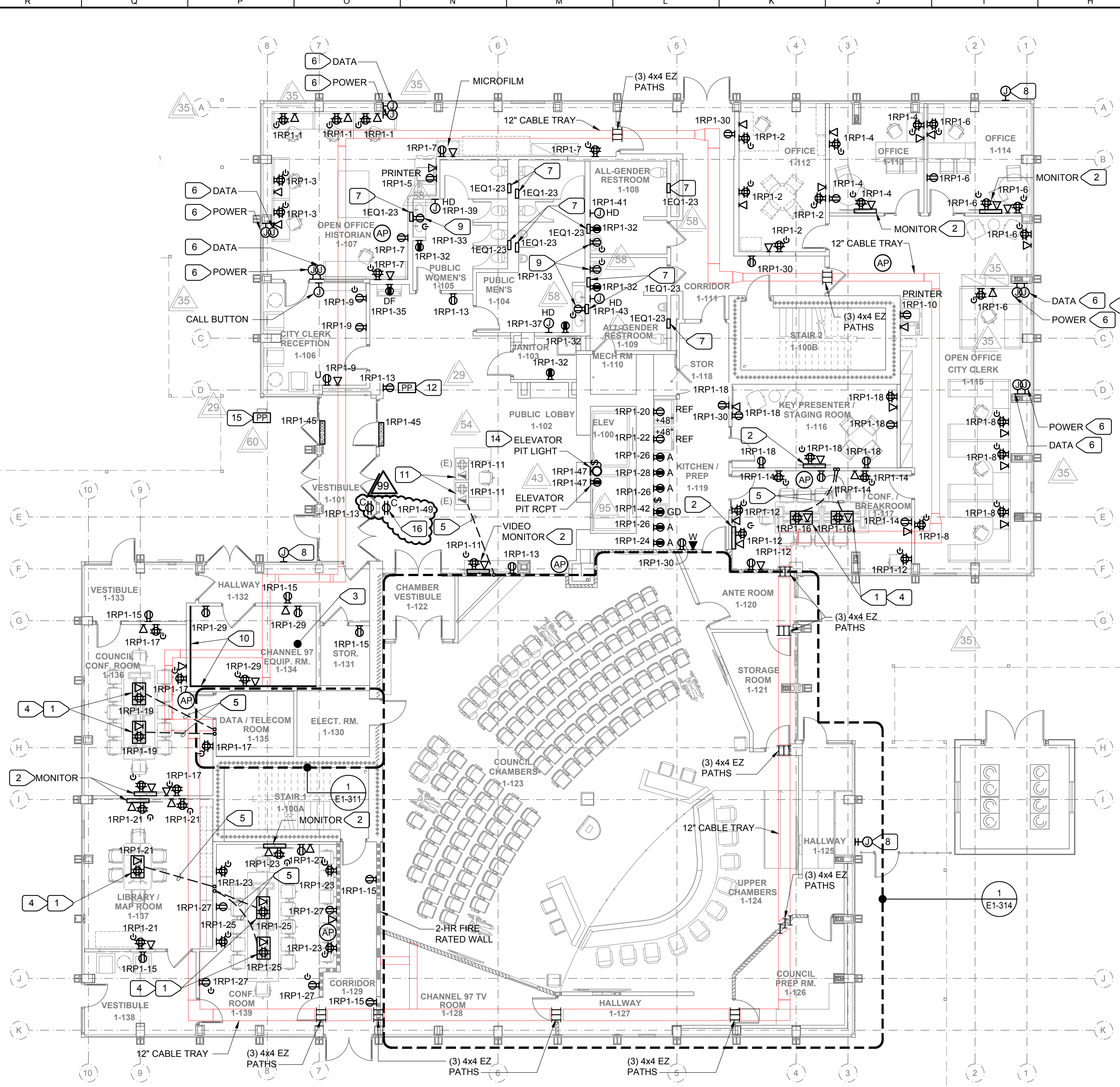
No.	Date	Description
20	11-10-22	ASI 012 - Clg. Revisions
21	01-26-23	ASI 028
22	06-14-23	ASI 074
23	06-23-23	ASI 079
24	07-24-23	ASI 088
25	09-15-2023	ASI 093 - SKYLIGHT INFILL
26	10-11-23	ASI 100.1

NEW CITY HALL RENOVATIONS & RELOCATION PROJECT
501 & 509 West Weber Ave.
Stockton, CA 95203

Architect of Record	BP
Project Architect	CH
Drafted By	VPH / OA / JAP
Checked By	JPN
File Date	10/11/2023
Project Number	E016015

FIRST FLOOR REFLECTED CEILING PLAN - BUILDING 1

Sheet Number
A1-111
Sheet 104 of 481
5471C.101



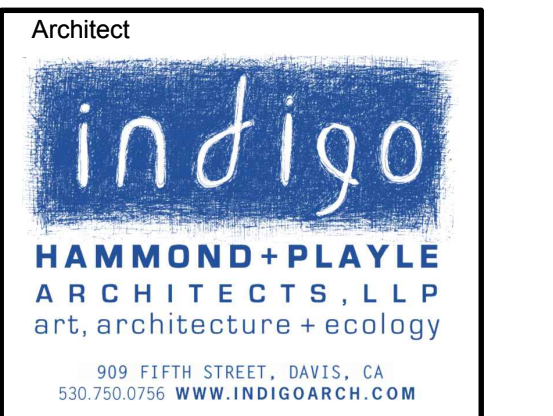
1 FIRST FLOOR REMODEL PLAN - ELECTRICAL - BUILDING 1
 E1-301 SCALE: 1/8"=1'-0"

- ### NUMBERED NOTES
- PROVIDE LEGRAND WIREMOLD EFB6S FLOOR BOX UNDER FURNITURE. PROVIDE WITH A COVER, FOUR RECEPTACLES (ONE CONTROLLED), 1-1/4" DATA CONDUIT, 4 DATA JACKS AND 1-1/2" CONDUIT FOR AV. SEE AV DRAWINGS FOR ADDITIONAL REQUIREMENTS.
 - PROVIDE CHIEF PAC525 IN WALL DEVICE BOX WITH DESIGNATED AV AND POWER OUTLETS. PROVIDE 3/4" POWER CONDUIT. PROVIDE 1-1/4" DATA CONDUIT AND CABLING. PROVIDE 1-1/4" AV CONDUIT AND CABLING. SEE AV DRAWINGS FOR MOUNTING HEIGHT AND ADDITIONAL REQUIREMENTS.
 - PROVIDE SEPARATE RACKS FOR AT&T AND COMCAST SERVICES FOR CHANNEL 97 FUNCTIONS.
 - PROVIDE LEGRAND WIREMOLD EFB6S FLOOR BOX UNDER FURNITURE. PROVIDE WITH A COVER, FOUR RECEPTACLES (ONE CONTROLLED), 4 DATA JACKS WITH SPACE AND 1-1/2" SPARE CONDUIT FOR AV.
 - SAW CUT THE FLOOR FOR POWER/DATA BOXES AND PROVIDE CONDUITS. DATA AND AV CONDUIT SHALL HAVE A BEND RADIUS OF 10 TIMES THE DIAMETER.
 - PROVIDE POWER AND DATA MODULAR FURNITURE CONNECTIONS WITHIN 12" OF MODULAR FURNITURE. PROVIDE RECESSED BACK BOXES, FOR POWER AND DATA, WITH COVER PLATES.
 - DATA - PROVIDE COVER PLATES WITH A 1-1/4" DIAMETER OPENING. FLEX CONDUIT AND GROMMET FOR DATA CABLING. PROVIDE TWO CAT 6 CABLES PER WORK STATION.
 - POWER - PROVIDE COVER PLATES WITH 3/4" DIAMETER OPENING, WITH 90 DEGREE SHORT ELBOW AND WHIP FOR POWER. PROVIDE CONNECTORS FOR THE WHIPS AND TERMINATE POWER WHIP INTO CONNECTORS TO CONNECT TO MODULAR FURNITURE. PROVIDE A MINIMUM OF ONE UN-CONTROLLED AND ONE CONTROLLED DUPLEX RECEPTACLE PER WORK STATION.
 - PROVIDE FLUSH MOUNTED LOCKABLE CABINET, WITH 120V, 20 AMP CIRCUIT TO FEED LOW VOLTAGE TRANSFORMER. HARDWIRE LOW VOLTAGE TRANSFORMER TO AUTO FAUCET AND AUTO FLUSH VALVES AT MEN'S/WOMEN'S TOILET ROOMS. INSTALL AND WIRE PER MANUFACTURER'S REQUIREMENTS. COORDINATE WITH PLUMBING DRAWINGS.
 - PROVIDE NEMA RATED 3R JUNCTION BOXES FOR FUTURE OUTDOOR WIRELESS ACCESS POINTS WITH ONE INCH CONDUIT STABBED ABOVE THE CEILING. PROVIDE J-HOOKS TO CABLE TRAY.
 - PROVIDE RECESSED CONTROLLED RECEPTACLE FOR BACKLIT MIRROR. INSTALL BACKLIT MIRROR PER MANUFACTURER'S REQUIREMENTS WITH 30" CORD WITH THREE-PRONG PLUG. CIRCUIT TO BE PROTECTED BY GFCI BREAKER.
 - PROVIDE PLYWOOD BACKBOARD MOUNTED AT FLOOR LEVEL, 2'X4'X3/4" FIRE RATED PLYWOOD MINIMUM. PAINT MATTE WHITE, WITH FIRE RETARDANT PAINT, AND DO NOT PAINT OVER LABEL. ATTACH TO STUD WITH #10 X 2" SCREWS AT 24" O.C. MAXIMUM HORIZONTAL AND 16" MAXIMUM VERTICAL AND WITHIN 2" OF TOP AND BOTTOM. ENSURE MINIMUM OF (1) MILL STAMP IS EXPOSED FROM PAINT ON EACH BACKBOARD PANEL.
 - REUSE EXISTING FLOOR BOX IF POSSIBLE. REFURBISH EXISTING FLOOR BOX (PROVIDE NEW COVER, NEW OUTLET, NEW JACKS, ETC.). CLEAN/REPAINT BOX.
 - PROVIDE PUSH PLATE AND CONNECTIONS TO AUTO DOOR. BOTH DOORS ARE TO OPEN AT THE SAME TIME. SEE ARCHITECTURAL DRAWINGS.
 - CAT CABLING MUST BE PULLED AND POWER WHIP MUST BE WIRED BEFORE THE MODULAR FURNITURE IS INSTALLED.
 - PROVIDE (2) LUMINAIRES (MAKE: LITHONIA, MODEL: OLVTMW OR EQUAL) FOR ELEVATOR PIT. PLACE TO MEET ASME A17.1-2013/CSA B44-13 PIT ILLUMINATION REQUIREMENTS. MARK FINAL LOCATIONS ON AS-BUILTS.
 - PROVIDE PUSH PLATE AND CONNECTIONS TO AUTO DOOR. MOUNT PUSH PLATE ON BOLLARD, SEE ARCHITECTURAL DRAWINGS.
 - DEDICATED CEILING RECEPTACLE FOR METAL DETECTOR. VERIFY FINAL LOCATION WITH OWNER PRIOR TO ROUGH-IN.

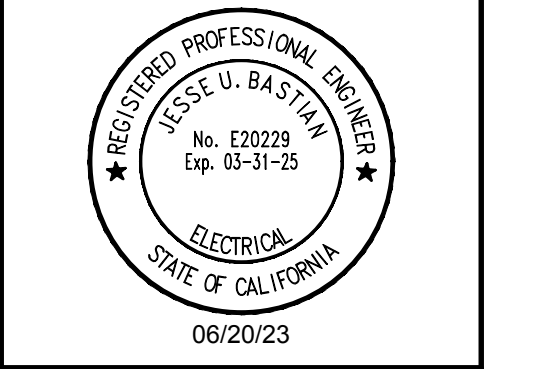
- ### GENERAL NOTES
- WHENEVER POSSIBLE, CONTRACTOR MUST FIRST REUSE EXISTING PENETRATIONS IN THE REINFORCED CONCRETE FLOOR SLAB AND WALLS FOR ANY PIPING, CONDUIT, DUCTWORK, ETC. WHERE NEW PENETRATIONS ARE UNAVOIDABLY REQUIRED IN THE BUILDING, AND NOT SHOWN ON STRUCTURAL DRAWINGS, OBTAIN WRITTEN APPROVAL BY THE STRUCTURAL ENGINEER AND ARCHITECT. SEE STRUCTURAL AND ARCHITECTURAL DRAWINGS.
 - ADDITIONAL DATA AND LOW VOLTAGE CABLING FOR SECURITY AND AV EQUIPMENT WILL BE REQUIRED ON THIS FLOOR. COORDINATE WITH SECURITY AND AUDIOVISUAL DRAWINGS FOR QUANTITY AND LOCATION, FOR ALL DEVICES. UTILIZE CABLE TRAY SUPPORT FOR ROUTING OF LOW VOLTAGE CABLING, AND PROVIDE ADDITIONAL CABLING INFRASTRUCTURE SUPPORT WHERE CABLE TRAY IS NOT PRESENT; I.E. CONDUIT STUB, JUNCTION AND BACK BOXES IN WALLS AND INDIVIDUAL DEVICES ON THE CEILING.

GENERAL NOTE ON CORING OF SLABS AND WALLS:
 WHEREVER POSSIBLE, CONTRACTOR MUST FIRST REUSE EXISTING PENETRATIONS IN THE REINFORCED CONCRETE FLOOR SLABS AND WALLS FOR ANY PIPING, CONDUIT, DUCTWORK, ETC. WHERE NEW PENETRATIONS ARE UNAVOIDABLY REQUIRED IN THE BUILDING, AND NOT SHOWN IN THE STRUCTURAL DRAWINGS, OBTAIN WRITTEN APPROVAL BY STRUCTURAL ENGINEER AND ARCHITECT. APPROVAL WILL REQUIRE THE NEW PENETRATION BE XRAYED PER REQUIREMENTS DESCRIBED ON STRUCTURAL DRAWINGS.

ALTERNATE NO. 2 - ADD EMERGENCY RESPONDER RADIO COMMUNICATION SYSTEM ERRCS IMPROVEMENTS:
 EMERGENCY RESPONDER RADIO COMMUNICATION SYSTEM ERRCS COMPLETE IMPROVEMENTS TO FLOOR LEVELS 1 THROUGH 5 IN BUILDING 1 AND FLOOR LEVELS 1 THROUGH 5 OF BUILDING 2. THE TERM ERRCS IS SYNONYMOUS WITH DISTRIBUTED ANTENNA SYSTEM DAS WHICH MAY BE USED IN SOME LOCATIONS ON THE PLANS OR IN THE SPECIFICATIONS. SEE BOX NOTES ON DRAWINGS. THIS ALTERNATE APPLIES TO THIS ENTIRE SHEET, SEE SPECIFICATION 01 23 00 ALTERNATES FOR DETAIL AND WHICH SPECIFIC ITEMS ARE INCLUDED IN THE BASE BID, NOT THE ALTERNATE.



Consultant
M. NEILS ENGINEERING INC.
 Electrical Engineers | Lighting Designers
 100 Howe Ave., Suite 235N
 Sacramento, CA 95825-9217
 www.mneilsengineering.com
 Tel: (916) 923-4400 Fax: (916) 923-4410
 PROJECT #: 18337.21



Agency Approvals

City Approvals

Issue: CONFORMED SET

No.	Date	Description
1	01-10-23	ASI 23
2	01-27-23	ASI 030
3	03-03-23	ASI 41
4	03-13-23	ASI 45
5	03-14-23	ASI 47
6	05-25-23	ASI 066
7	06-23-23	ASI 082
8	07-17-23	ASI 088

Project
NEW CITY HALL RENOVATIONS & RELOCATION PROJECT
 501 & 509 West Weber Ave.
 Stockton, CA 95203

Architect of Record	BP
Project Architect	
Drafted By	
Checked By	
File Date	Project Number
04/15/22	E016015

Sheet Title
FIRST FLOOR REMODEL PLAN - ELECTRICAL - BUILDING 1

Sheet Number
E1-301

CONFORMED SET

UNAUTHORIZED CHANGES & USES: M. Neils Engineering, Inc. preparing these plans will not be responsible for, or liable for unauthorized changes to or uses to these plans. All changes to these plans must be in writing and must be approved by M. Neils Engineering, Inc. Jul 13, 2023 3:55pm / p1040v

Oct 10, 2023 - 5:56pm, / prodovsky
 UNAUTHORIZED CHANGES & USES: M. Neils Engineering, Inc. preparing these plans will not be responsible for, or liable for unauthorized changes to or uses to these plans. All changes to these plans must be in writing and must be approved by M. Neils Engineering, Inc.

MECHANICAL EQUIPMENT CONNECTION SCHEDULE	
TAG	DESCRIPTION
202	2 #12 CU THWN, 1 #12 CU GND., IN 1/2" C.
403	3 #8 CU THWN, AND 1 CU #10 GND., IN 1" C.
603	3 #6 CU THWN, AND 1 CU #10 GND., 1-1/4" C.

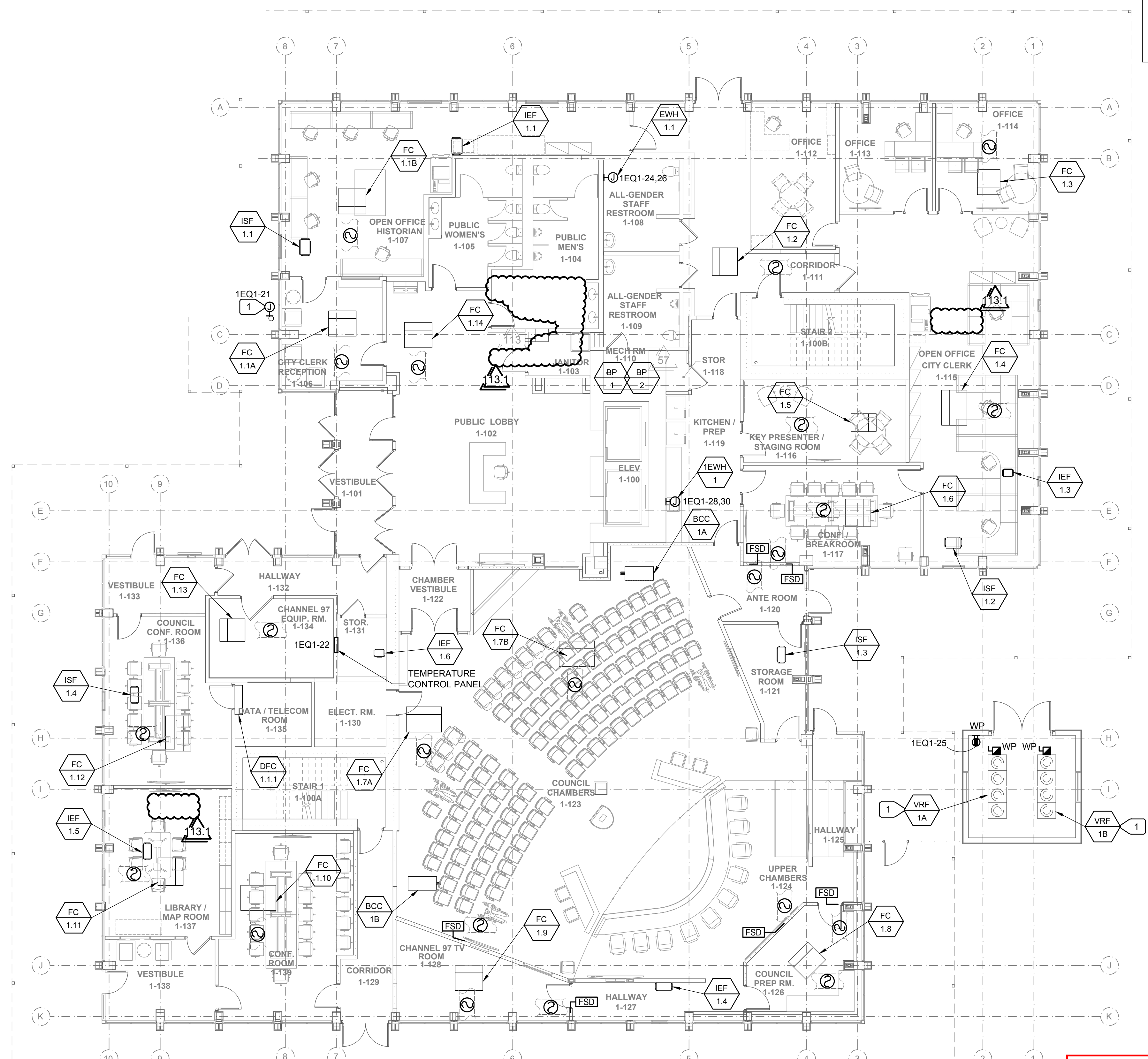
NOTE: ALL ABOVE FEEDERS ARE FOR 75 DEGREE RATED BREAKERS AND CONNECTORS.

GENERAL NOTE ON CORING OF SLABS AND WALLS:

WHEREVER POSSIBLE, CONTRACTOR MUST FIRST REUSE EXISTING PENETRATIONS IN THE REINFORCED CONCRETE FLOOR SLABS AND WALLS FOR ANY PIPING, CONDUIT, DUCTWORK, ETC. WHERE NEW PENETRATIONS ARE UNAVOIDABLY REQUIRED IN THE BUILDING, AND NOT SHOWN IN THE STRUCTURAL DRAWINGS, OBTAIN WRITTEN APPROVAL BY STRUCTURAL ENGINEER AND ARCHITECT. APPROVAL WILL REQUIRE THE NEW PENETRATION BE XRAYED PER REQUIREMENTS DESCRIBED ON STRUCTURAL DRAWINGS.

ALTERNATE NO. 2 - ADD EMERGENCY RESPONDER RADIO COMMUNICATION SYSTEM ERRCS IMPROVEMENTS:

EMERGENCY RESPONDER RADIO COMMUNICATION SYSTEM ERRCS COMPLETE IMPROVEMENTS TO FLOOR LEVELS 1 THROUGH 5 IN BUILDING 1 AND FLOOR LEVELS 1 THROUGH 5 OF BUILDING 2. THE TERM ERRCS IS SYNONYMOUS WITH DISTRIBUTED ANTENNA SYSTEM DAS WHICH MAY BE USED IN SOME LOCATIONS ON THE PLANS OR IN THE SPECIFICATIONS. SEE BOX NOTES ON DRAWINGS. THIS ALTERNATE APPLIES TO THIS ENTIRE SHEET, SEE SPECIFICATION 01 23 00 ALTERNATES FOR DETAIL AND WHICH SPECIFIC ITEMS ARE INCLUDED IN THE BASE BID, NOT THE ALTERNATE.



MECHANICAL EQUIPMENT CONNECTION SCHEDULE

SYMBOL	DESCRIPTION	VOLTAGE/PHASE	LOAD	MINIMUM CIRCUIT AMPACITY	MAXIMUM OVERCURRENT PROTECTION	FEEDER	CIRCUIT	NOTES
FC-1-1A	VRF INDOOR FAN COIL UNIT	208/1		2.7A	15	202	1EQ1-1,3	3
FC-1-1B	VRF INDOOR FAN COIL UNIT	208/1		2.7A	15	202	1EQ1-1,3	3
FC-1-14	VRF INDOOR FAN COIL UNIT	208/1		2.7A	15	202	1EQ1-1,3	3
FC-1-10	VRF INDOOR FAN COIL UNIT	208/1		3.5A	15	202	1EQ1-13,15	3
FC-1-11	VRF INDOOR FAN COIL UNIT	208/1		2.7A	15	202	1EQ1-13,15	3
FC-1-12	VRF INDOOR FAN COIL UNIT	208/1		3.5A	15	202	1EQ1-13,15	3
FC-1-13	VRF INDOOR FAN COIL UNIT	208/1		1.6A	15	202	1EQ1-13,15	3
BCC-1A	VRF BRANCH CIRCUIT CONTROLLED BOX	208/1		1.6A	15	202	1EQ1-17,19	
BCC-1B	VRF BRANCH CIRCUIT CONTROLLED BOX	208/1		0.9A	15	202	1EQ1-17,19	
VRF-1B	VRF OUTDOOR UNIT	208/3		33A	40	403	1EQ1-27,29,31	
VRF-1B	VRF OUTDOOR UNIT	208/3		33A	40	403	1EQ1-33,35,37	
FC-1-2	VRF INDOOR FAN COIL UNIT	208/1		2.7A	15	202	1EQ1-5,7	3
FC-1-3	VRF INDOOR FAN COIL UNIT	208/1		1.6A	15	202	1EQ1-5,7	3
FC-1-4	VRF INDOOR FAN COIL UNIT	208/1		3.5A	15	202	1EQ1-5,7	3
FC-1-5	VRF INDOOR FAN COIL UNIT	208/1		1.1A	15	202	1EQ1-5,7	3
FC-1-6	VRF INDOOR FAN COIL UNIT	208/1		2.7A	15	202	1EQ1-5,7	3
FC-1-7A	VRF INDOOR FAN COIL UNIT	208/1		3.5A	15	202	1EQ1-9,11	3
FC-1-7B	VRF INDOOR FAN COIL UNIT	208/1		3.5A	15	202	1EQ1-9,11	3
FC-1-8	VRF INDOOR FAN COIL UNIT	208/1		2.7A	15	202	1EQ1-9,11	3
FC-1-9	VRF INDOOR FAN COIL UNIT	208/1		2.7A	15	202	1EQ1-9,11	3
VRF-1A	VRF OUTDOOR UNIT	208/3		52A	60	603	1EQ1-10,12,14	
VRF-1A	VRF OUTDOOR UNIT	208/3		52A	60	603	1EQ1-16,18,20	
ISF-1.1	INLINE SUPPLY FAN	115/1	6.2A		20	202	1EQ1-2	
IEF-1.1	EXHAUST FAN	115/1	799W		20	202	1EQ1-2	5
ISF-1.2	INLINE SUPPLY FAN	115/1	6.2A		20	202	1EQ1-4	
IEF-1.2	EXHAUST FAN	115/1	91W		20	202	1RP5-63	
ISF-1.3	INLINE SUPPLY FAN	115/1	4.8A		20	202	1EQ1-6	
IEF-1.3	EXHAUST FAN	115/1	78W		20	202	1EQ1-6	
ISF-1.4	INLINE SUPPLY FAN	115/1	5.1A		20	202	1EQ1-8	
IEF-1.4	EXHAUST FAN	115/1	87W		20	202	1EQ1-8	
IEF-1.5	EXHAUST FAN	115/1	108W		20	202	1EQ1-8	
IEF-1.6	EXHAUST FAN	115/1	42W		20	202	1EQ1-8	
BP-1	BOOSTER PUMP	460/3	13.6A		20	204	1LP1-38,40,42	
BP-2	BOOSTER PUMP	460/3	13.6A		20	204	1LP1-38,40,42	

GENERAL MECHANICAL EQUIPMENT CONNECTION SCHEDULE NOTES:

- THE ABOVE INFORMATION IS FOR A SPECIFIC MANUFACTURER. THE ACTUAL MANUFACTURER FOR THE EQUIPMENT MAY BE DIFFERENT. COORDINATE WITH MECHANICAL EQUIPMENT SUBMITTALS FOR ACTUAL LOADS AND OVERCURRENT PROTECTION REQUIREMENTS PRIOR TO INSTALLATION OF WIRING.

MECHANICAL EQUIPMENT CONNECTION NOTES:

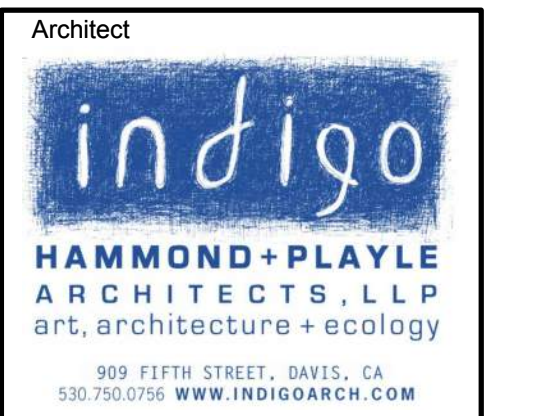
- SEE FEEDER SCHEDULE THIS SHEET FOR FEEDER SIZE.
- INTERLOCK WITH HOOD EXHAUST.
- PROVIDE DUCT DETECTOR.
- INTERLOCK WITH INDOOR UNIT
- PROVIDE MOTOR STARTER

**CITY OF STOCKTON
APPROVED PLANS**
By:Rodrigo F Date:10/24/2023

NUMBERED NOTES

1	PROVIDE HEAT TAPE POWER FOR THE SPRINKLER RISER.
2	NOTE NOT USED.
3	NOTE NOT USED.

1 FIRST FLOOR REMODEL PLAN - MECHANICAL - BUILDING 1
E1-301.1 1/8"=1'-0"



Consultant
M. NEILS ENGINEERING, INC.
Electrical Engineers | Lighting Designers
100 Howe Ave., Suite 235N
Sacramento, CA 95825-9217
www.mneilsengineering.com
Tel: (916) 923-4400 Fax: (916) 923-4410
PROJECT #: 18337.21

REGISTERED PROFESSIONAL ENGINEER
ELECTRICAL
STATE OF CALIFORNIA
No. E20229
Exp. 03-31-25

Agency Approvals

City Approvals

Issue: CONFORMED SET

No.	Date	Description
57	03-09-23	ASI 44 / RPI 218
79	08-25-23	ASI 066
113	09-27-23	ASI 100
113.1	10-10-23	ASI 100.1

Project
**NEW CITY HALL
RENOVATIONS &
RELOCATION
PROJECT**
501 & 509 West Weber Ave.
Stockton, CA 95203

Architect of Record: BP
Project Architect:
Drafted By:
Checked By:
File Date: 04/15/22
Project Number: E016015

Sheet Title
**FIRST FLOOR
REMODEL PLAN -
MECHANICAL -
BUILDING 1**

Sheet Number
E1-301.1

CONFORMED SET

GENERAL NOTE ON CORING OF SLABS & WALLS:

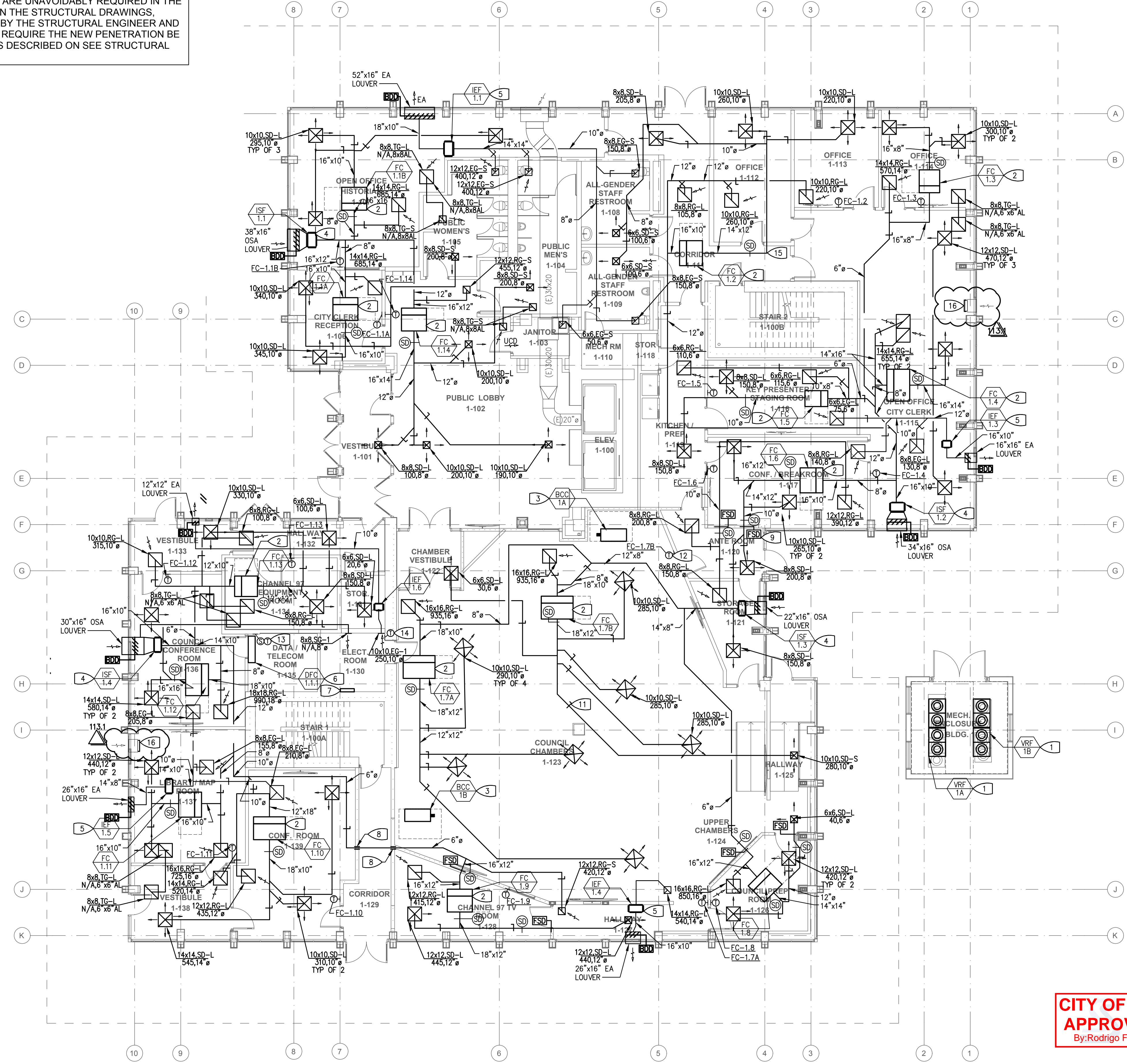
WHEREVER POSSIBLE, CONTRACTOR MUST FIRST REUSE EXISTING PENETRATIONS IN THE REINFORCED CONCRETE FLOOR SLABS AND WALLS FOR ANY PIPING, CONDUIT, DUCTWORK, ETC. WHERE NEW PENETRATIONS ARE UNAVOIDABLY REQUIRED IN THE BUILDING, AND NOT SHOWN IN THE STRUCTURAL DRAWINGS, OBTAIN WRITTEN APPROVAL BY THE STRUCTURAL ENGINEER AND ARCHITECT. APPROVAL WILL REQUIRE THE NEW PENETRATION BE XRAYED PER REQUIREMENTS DESCRIBED ON SEE STRUCTURAL DRAWINGS.

SHEET NOTES:

- ALL EXISTING EQUIPMENT, DUCTING, PIPING, ETC., SHOWN ON PLANS ARE BASED ON AVAILABLE EXISTING DRAWINGS AND LIMITED SITE SURVEYS, AND SHOWN FOR CLARITY ONLY.
- EXHAUST AIR TERMINATIONS SHALL BE LOCATED MINIMUM 10' FROM ANY FORCED AIR INLET TO THE BUILDING, AND 3' FROM ANY OTHER OPENING INTO THE BUILDING (2019 CMC 502.2.1)
- PROVIDE RADIUS ELBOWS ON RECTANGULAR DUCTWORK.
- PROVIDE CONICAL FITTINGS ON ALL RECTANGULAR TO ROUND DUCT CONNECTIONS.
- PROVIDE SHOE FITTINGS ON ALL RECTANGULAR TO RECTANGULAR DUCT CONNECTIONS.
- PROVIDE A MANUAL VOLUME BRANCH AT EVERY BRANCH DUCT.
- FLEXIBLE DUCT AT AIR TERMINALS SHALL BE LIMITED TO 5'-0" IN LENGTH AND SHALL NOT BE USED LIEU OF A RIGID ELBOW.
- CONTRACTOR SHALL PROVIDE DETAILED SHOP DRAWINGS, DURING THE SUBMITTAL PROCESS, THAT COORDINATE WITH EXISTING AND NEW ELEMENTS ABOVE CEILING PRIOR TO CONSTRUCTION.
- ALL ACCESS TO CONTROL BOXES AND MECHANICAL CLEARANCES TO REMAIN. NO DUCTING OR PIPING SHALL BE LOCATED IN FRONT/BLOCKING ACCESS PANELS.
- SIDEWALL AIR TERMINALS IN ELECTRICAL ROOM SHALL BE MOUNTED WITH TOP OF GRILLE AT 12" BELOW EXISTING SLAB ABOVE.
- LOUVERS AT EXTERIOR SHALL BE LOCATED WITH BOTTOM FACE AT 10"-6" AFF
- COORDINATE THERMOSTAT LOCATIONS WITH WALL SWITCHES, ETC.

KEYED NOTES:

- VARIABLE REFRIGERANT FLOW (VRF) OUTDOOR UNIT. SECURE TO GRADE PER DETAIL **4/M-402**. PROVIDE 48" BETWEEN FRONT SERVICE SIDE AND 30" AROUND LEFT, RIGHT AND REAR SIDES. TYPICAL OF 2.
- VARIABLE REFRIGERANT FLOW (VRF) INDOOR FAN COIL. PROVIDE FLEXIBLE DUCT CONNECTION AT RETURN/SUPPLY INLETS. SEE PLUMBING DRAWINGS FOR CONDENSATE ROUTING. SEE SHEET **M2-201** FOR REFRIGERANT PIPE ROUTING TO BRANCH SELECTOR BOX. SECURE TO STRUCTURE ABOVE PER DETAIL **5/M-402**, TYPICAL.
- VARIABLE REFRIGERANT FLOW (VRF) BRANCH SELECTOR BOX. SEE SHEET **M2-201** FOR REFRIGERANT PIPE ROUTING TO INDOOR FAN COIL UNITS AND OUTDOOR UNITS. SECURE TO STRUCTURE ABOVE PER DETAIL **6/M-402**, TYPICAL OF 2.
- OUTSIDE AIR INLINE SUPPLY FAN SERVING INDOOR FAN COIL VENTILATION DEMANDS. SECURE TO STRUCTURE ABOVE PER DETAIL **3/M-402**. SEE INTERLOCK SCHEDULE ON SHEET **M-502** FOR CONTROLS. TYPICAL.
- RELIEF AIR/EXHAUST AIR INLINE FAN. SECURE TO STRUCTURE ABOVE PER DETAIL **3/M-402**. SEE INTERLOCK SCHEDULE ON SHEET **M-502** FOR CONTROLS. TYPICAL.
- HIGH WALL FAN COIL UNIT, SECURED TO WALL PER DETAIL **2/M-402**.
- CONTROL PANEL FOR VRF CONTROLLERS AND CONNECTION POINT FOR SIEMENS BACNET CONNECTION BY TCC. COORDINATE WITH ELECTRICAL DRAWINGS FOR PROVISION OF 120V/1PH SERVICE. TCC TO PROVIDE 120V/1PH TO 24VAC TRANSFORMER IN PANEL.
- ROUND DUCT THRU RATED WALL. SEAL PER DETAIL **1/M-405**. TYPICAL. SEE ARCHITECTURAL PLANS FOR RATED WALLS AND WALL TYPES.
- 1-1/2 HOUR FIRE-SMOKE DAMPER PER DETAIL **8/M-403**. PROVIDE INLINE DUCT SMOKE DETECTOR UPSTREAM OF DAMPER FOR ACTIVATION OF DAMPER. COORDINATE 120V/1PH ELECTRICAL SERVICE WITH DIV 26 PLANS. COORDINATE FIRE ALARM CONNECTION WITH DEFERRED FIRE ALARM SUBMITTAL. COORDINATE ACCESS TO ACTUATOR OUTSIDE OF DUCT STREAM WITH CEILING BELOW. TYPICAL FOR ALL FIRE-SMOKE DAMPERS ON THIS FLOOR.
- INLINE DUCT SMOKE DETECTOR FOR AUTOMATIC SUPPLY FAN SHUTOFF. PROVIDED BY ELECTRICAL, INSTALLED BY MECHANICAL. LOCATE ON SUPPLY DUCT DOWNSTREAM OF EQUIPMENT. COORDINATE ELECTRICAL SERVICE WITH DIV 26. COORDINATE FIRE ALARM CONNECTION WITH DEFERRED FIRE ALARM SUBMITTAL. TYPICAL FOR ALL DUCTED FAN COIL UNITS.
- MANUAL VOLUME DAMPER. PROVIDE ONE ON EVERY BRANCH DUCT. TYPICAL.
- VRF ZONE THERMOSTAT LOCATED AT 48" TO TOP OF DEVICE AT LOCATION SHOWN. COORDINATE LOCATION WITH ARCHITECTURAL FURNITURE PLANS AND ROOM ELEVATIONS PRIOR TO ROUGH-IN, TYPICAL.
- DUCTLESS FAN COIL REMOTE THERMOSTAT ON WALL WITH ROOM TEMPERATURE SENSOR. LOCATE AT 48" TO TOP OF DEVICE. SEE DETAIL **3/M-502**.
- LINE-VOLTAGE THERMOSTAT. SEE DETAIL **4/M-502**.
- PROVIDE A RADIUS ELBOW AT ALL 90° TURNS, TYPICAL FOR ALL FLOORS, BOTH BUILDINGS.
- CAP EXISTING REMAINING DUCT WITH 24 GAUGE DUCT ANS SHEET METAL SCREWS EVERY 6" O.C. SEAL AIRTIGHT. VERIFY SIZE OF DUCT BEFORE ORDERING OR MANUFACTURING PARTS.



CITY OF STOCKTON
APPROVED PLANS
 By:Rodrigo F Date:10/24/2023

1 MECHANICAL FIRST FLOOR PLAN - BUILDING 1
 SCALE: 1/8" = 1'-0"



909 FIFTH STREET, DAVIS, CA
 530.750.0756 WWW.INDIGOARCH.COM

Consultant
P PETERS consulting mechanical and electrical engineers
 2411 Alhambra Blvd, Ste. 100
 Sacramento, CA 95817
 Tel (916) 447-2841
 www.peterseng.com
 Job no. 20-0054



PLOT DATE: 10/11/2023

Agency Approvals

City Approvals

ISSUE: CONFORMED SET

No.	Date	Description
113.1	10/10/23	ASI 100.1

Project

NEW CITY HALL RENOVATIONS & RELOCATION PROJECT

501 & 509 West Weber Ave.
 Stockton, CA 95203

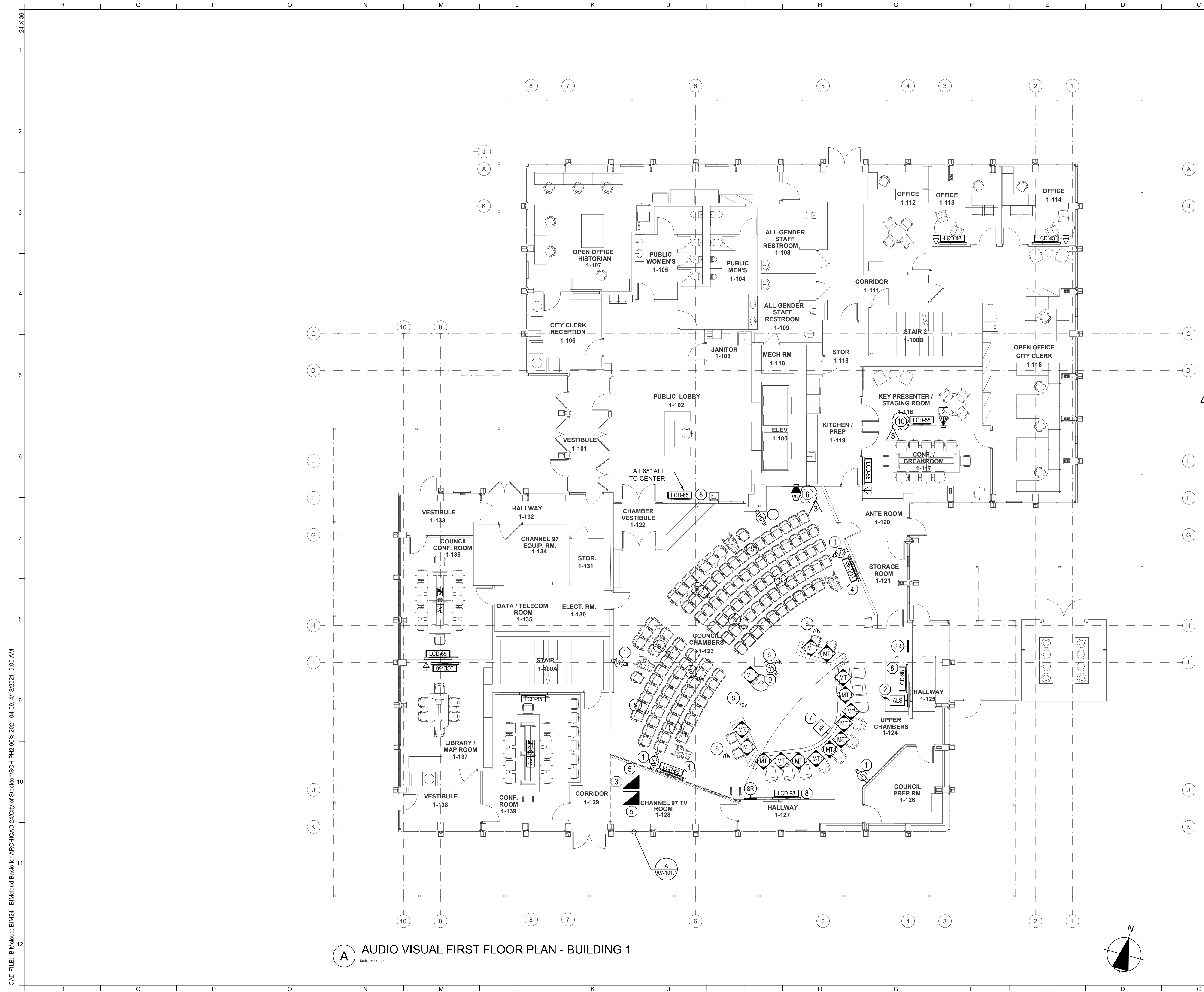
Architect of Record	BP
Project Architect	CH
Drafted By	RM/TC
Checked By	ST
File Date	Project Number
04/15/22	E016015

Sheet Title
MECHANICAL FIRST FLOOR PLAN - BUILDING 1

Sheet Number

M1-101

Sheet 252 of 476
5471C.251



A AUDIO VISUAL FIRST FLOOR PLAN - BUILDING 1
SCALE: 1/8" = 1'-0"

GENERAL NOTES

1. DEMO ALL EXISTING AUDIOVISUAL EQUIPMENT AND RECYCLE PER CALIFORNIA REQUIREMENTS.
- # KEYNOTES
1. INFRASTRUCTURE ONLY. 4 SQUARE BACK BOX WITH 3/4" CONDUIT TO 1-128. FILL WITH (1) CAT 6. COORDINATE LOCATION IN FIELD.
2. AT 90° AFF. ALS MOUNTED AT 90° AFF. PROVIDE ASSISTIVE LISTENING HEADSETS IN CHAMBERS EQUAL TO AT LEAST 4% OF THE FIXED SEATING WITH 20% OF THE HEADSETS COMPLIANT WITH T-COIL HEARING AID SYSTEMS.
3. HOFFMAN A12N124 NEMA TYPE-1 BOX. FOR BSP PANEL.
4. LCD DISPLAY MOUNTED ON ARTICULATING MOUNT. 4 SQUARE BACK BOX WITH 3/4" CONDUIT TO 1-128.
5. (1) AV RACK, (1) CHANNEL 97 RACK, MIDDLE ATLANTIC WRK-37-27, PROVIDED AND INSTALLED AS A MATCHED PAIR.
6. PRESS MEDIA PLATE, 2-GANG, COORDINATE WITH FURNITURE.
7. DAIS FRONT INPUT AV PLATE, 1-GANG, COORDINATE WITH DAIS LAYOUT.
8. LCD DISPLAY MOUNTED ON TILT SURFACE MOUNT. 4 SQUARE BACK BOX WITH 3/4" CONDUIT TO 1-128.
9. OFOI PRODUCTION CAMERA ON COLUMN. INFRASTRUCTURE ONLY. 4 SQUARE BACK BOX WITH 3/4" CONDUIT TO 1-128. FILL WITH (1) CAT 6. COORDINATE LOCATION IN FIELD.
10. (1) 1" CONDUIT. FILL (1) CAT 6 CABLE TO CHANNEL 97 RACK IN 1-128.

Architect

HAMMOND+PLAYLE
 ARCHITECTS, LLP
 art, architecture + ecology
 909 FIFTH STREET, DAVIS, CA
 530.750.0756 WWW.INDIGOARCH.COM

Consultant

 180 Grand Ave.
 Suite 950
 Oakland, CA 94612
 510.268.8373
 www.guidepostsolutions.com



Agency Approvals
CITY OF STOCKTON APPROVED PLANS
 By: jschweig; 05/11/2022

City Approvals
Public Works Department
 Approved by: *Chia Hwang* 04/19/22
 Date: _____
 City Engineer, Stockton, CA

Issue: CONFORMED SET

No.	Date	Description
3	02/03/22	LOC NO.4

Project
NEW CITY HALL RENOVATIONS & RELOCATION PROJECT
 501 & 509 West Weber Ave.
 Stockton, CA 95203

Architect of Record: BP
 Project Architect: _____
 Drafted By: AQ
 Checked By: CM

File Date: 04/15/2022
 Project Number: E016015

Sheet Title
AUDIO VISUAL FIRST FLOOR PLAN - BUILDING 1

Sheet Number
AV1-101
 Sheet 454 of 476

5471C.453

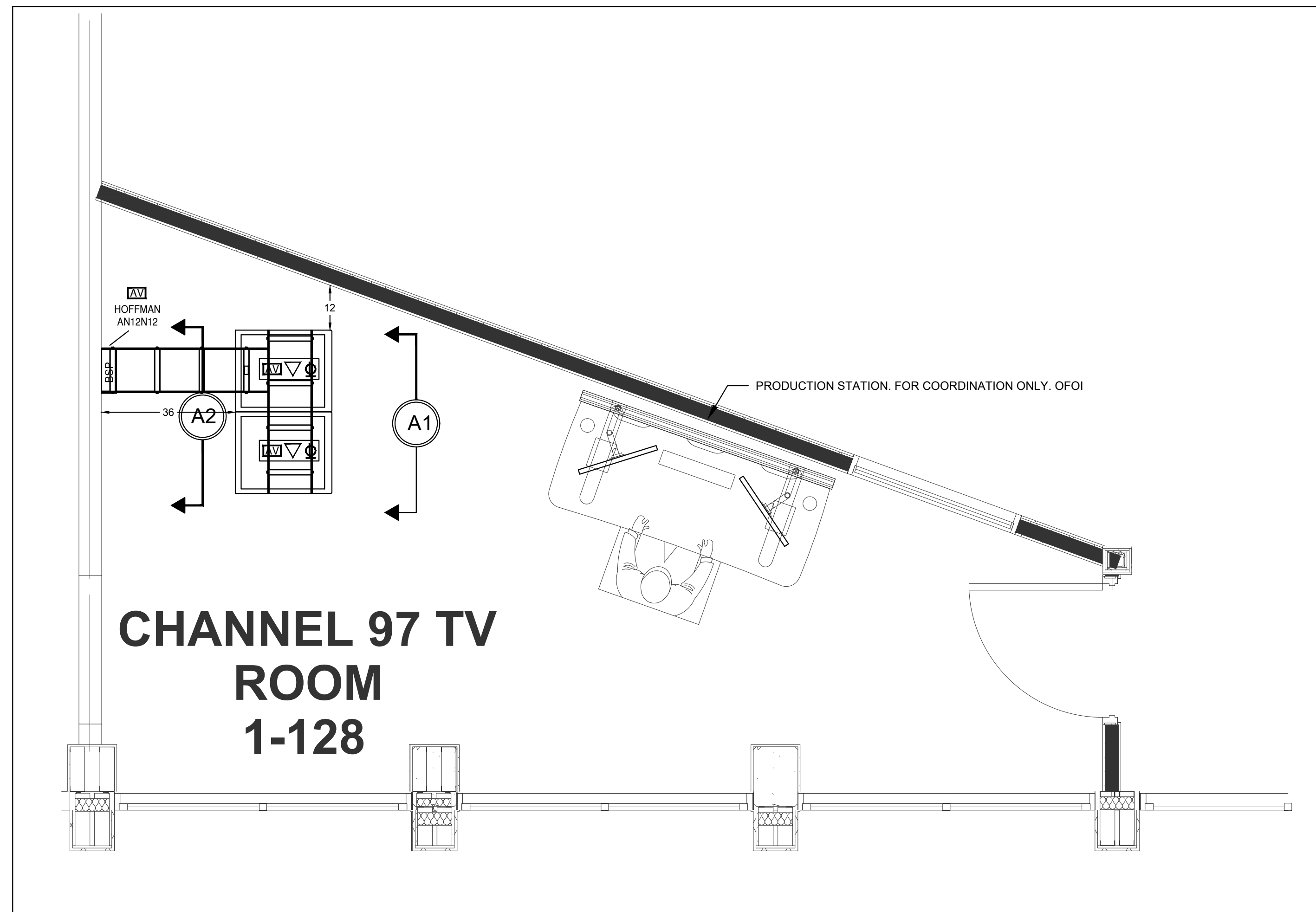
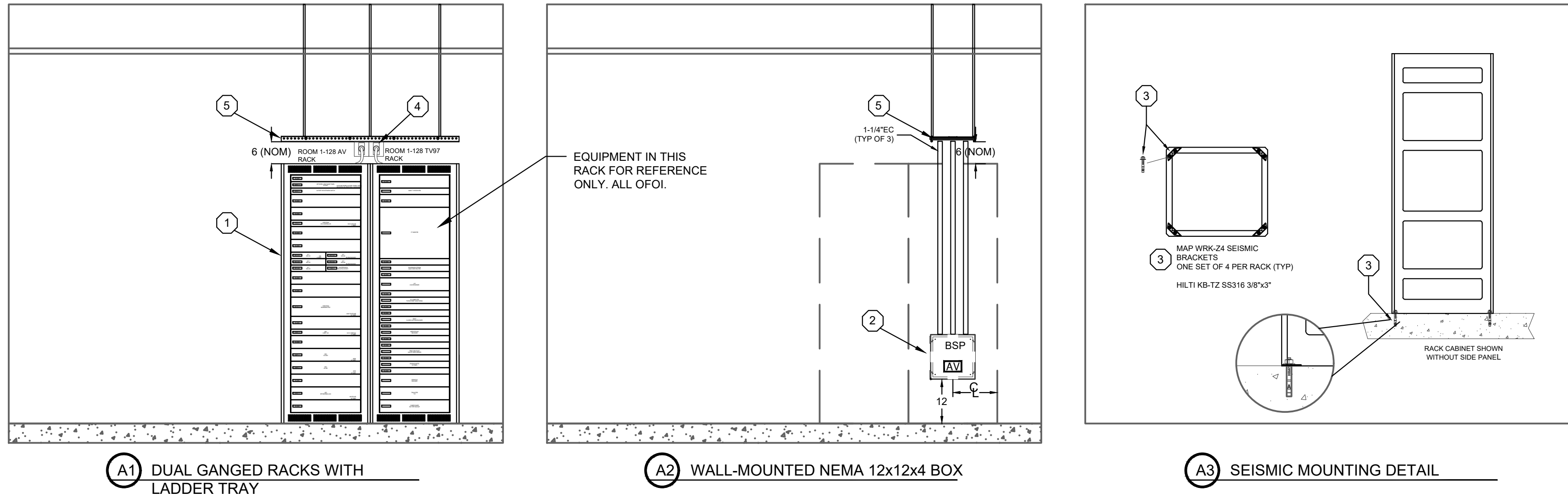
CONFORMED SET

CAD FILE: BIMcloud BIM24 - BIMcloud Basic for ARCHICAD 24/City of Stockton/SCH PH2 90% 2021-04-09_4/13/2021_9:00 AM

NOTES:
 INSTALL PER MANUFACTURER'S RECOMMENDATIONS.
 CABLE LADDER RACK BY EC

KEYNOTES:

- 1 MIDDLE ATLANTIC WRK-37-27 GANGED AV RACK WITH REAR DOOR, WRK-Z4 SEISMIC BRACKETS, AND SPN-37-267 SIDE PANELS.
- 2 HOFFMAN AN12N12 BOX WITH (3) 1-1/4" CONDUITS TO LADDER RACK, PROVIDED AND INSTALLED BY EC.
- 3 WRK-Z4 SEISMIC BASE MOUNTS WITH HILTI KB-TZ SS316 3/8"x3" WEDGE ANCHOR BOLTS
- 4 L5-30R 30A 120V RECEPTACLE IN 4SQ BOX MOUNTED TO RACK WITH 30A EXTENSION CORD TO RACK UPS.
- 5 LADDER RACK FROM BSP WALL LOCATION TO RACKS



A AUDIO VISUAL FIRST FLOOR PLAN - BUILDING 1 ENLARGED PLAN

Scale: 1/2" = 1'-0"

Architect
indigo
HAMMOND+PLAYLE
 ARCHITECTS, LLP
 art, architecture + ecology
 909 FIFTH STREET, DAVIS, CA
 950.750.0756 WWW.INDIGOARCH.COM

Consultant
Guidepost
 180 Grand Ave.
 Suite 950
 Oakland, CA 94612
 510.268.8373
 www.guidepostsolutions.com



Agency Approvals

CITY OF STOCKTON APPROVED PLANS
 By: jschweig: 05/11/2022

City Approvals

Public Works Department
 Approved by _____ 04/19/22
 Date
Chin Wang
 City Engineer, Stockton, CA

Issue: CONFORMED SET

No.	Date	Description

Project

NEW CITY HALL RENOVATIONS & RELOCATION PROJECT
 501 & 509 West Weber Ave.
 Stockton, CA 95203

Architect of Record	BP
Project Architect	AO
Checked By	CM
File Date	04/15/2022
Project Number	E016015

Sheet Title
AUDIO VISUAL FIRST FLR PLAN - BUILDING 1 ENLARGED PLAN

Sheet Number

AV1-101.1

Sheet 455 of 476

5471C.454

CONFORMED SET

CAD FILE: BIM24 - BIM24out Basic for ARCHICAD 24/City of Stockton/SCH PH2 90% 2021-04-09_4/13/2021, 9:00 AM